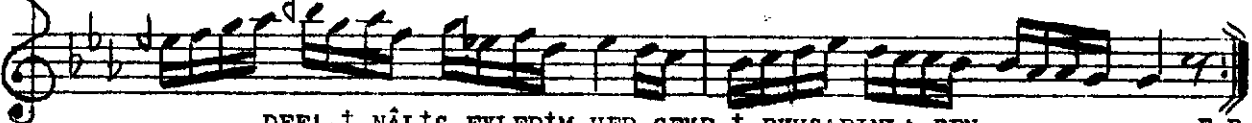
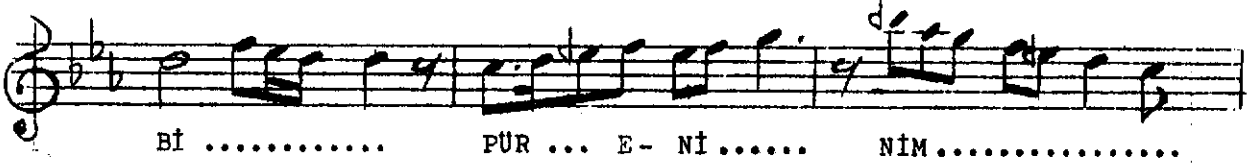
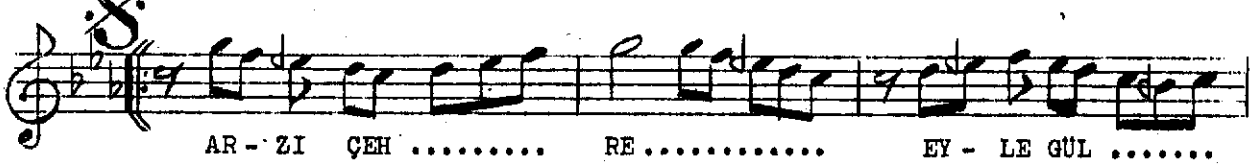
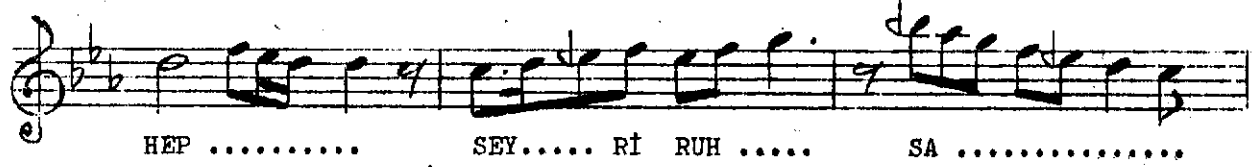


( Def'-i nâliş eylerim hep, seyr-i ruhsarınla ben )



ARZ-I ÇEHRE EYLE GÜL, ŞEN ŞATIR OL PİŞİMDE SEN  
GAYRİ KURTULSUN BU KALB-İ PÜR ENİNİM GİRYEDEN  
ARZ-I ÇEHRE EYLE GÜL, ŞEN ŞATIR OL PİŞİMDE SEN

E.B.